



MAINTENANCE, SPECIAL TOOLS AND SPARE PARTS

LM6000 Maintenance Advantages

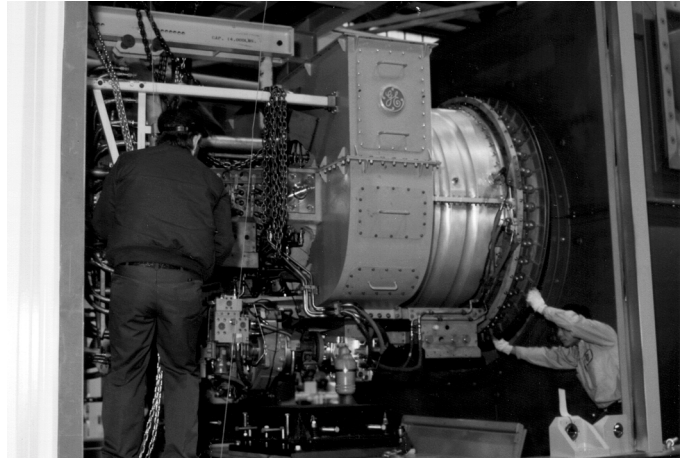
Down time is costly. In addition to labor and material for repairs, the owner loses profits while the turbine is down for maintenance. In most instances, the loss of profit during down time exceeds the cost of repairs.

The LM6000's simplified design helps reduce these field costs. The entire LM6000 package is designed for easy maintenance. Enclosures are large and provide ample working space. Components are accessible and easily adjusted or repaired, and an internal bridge-crane speeds engine removal for major repairs.

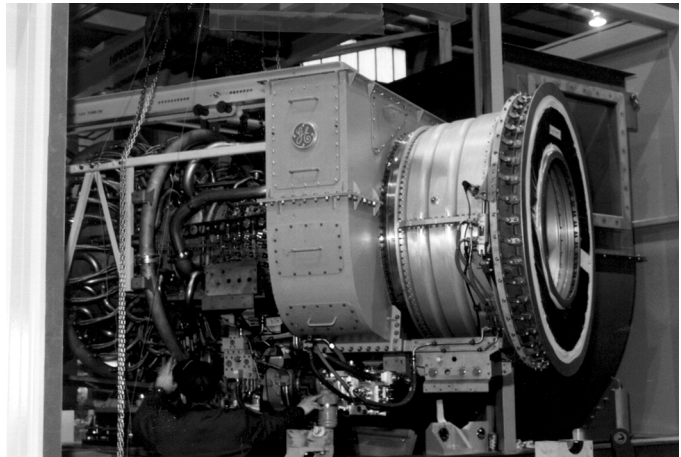
The result is more "up-time" and less "down-time." The LM6000 fleet of generator sets operated by S&S Energy Products has an average reliability of 99.5%, exceeding the industry average by almost a full percentage point. The LM6000's simple package design and easy replacement of turbine modules contributes to this fine result.

LM6000 Repairs

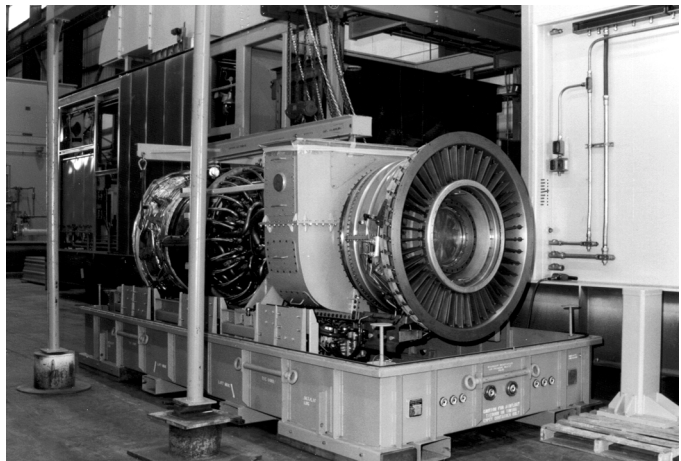
To speed repairs, members of GE's engine lease pool can have stock replacement engines dispatched to the job site for either planned repairs or an unscheduled overhaul.



Workmen Prepare To Remove An LM6000 Turbine Engine.



Built-In Bridge Crane Supports The Turbine.



Simplified Engine Removal Contributes To The High "Reliability" Of The LM6000 Turbine.



The owner of an LM6000 package can easily remove the entire turbine engine in the event of serious failure. A replacement engine can be installed and on-line within 48 hours, and the customer's operations can return to normal while the engine is being repaired off-site.

Engine Compartment Design

The S&S Energy Products engine compartment includes a shock isolation mounting system that permits the LM6000 turbine to ship in the package. This eliminates field reassembly. The turbine arrives tested, wired and fully piped.

The engine compartment includes built-in lighting, walkways and comfortable working space. The overhead bridge crane can easily lift and turn the engine for removal through the side doors.

"On Condition" Maintenance

Maintenance on many gas turbines is scheduled on a "clock-hour" basis. Parts are replaced after a set number of operating hours. This can lead to unnecessary costs and maintenance.

The LM6000 is designed for "On-Condition" maintenance. Every six months the engine is given a thorough borescope inspection. Twenty-one borescope ports permit close inspection of all major internal parts.



Borescope inspection For Preventative Maintenance.

Preventative Maintenance

This inspection reveals wear and mechanical problems. Maintenance is scheduled only when inspection shows a specific need, rather than replacing parts on an arbitrary schedule.

S&S Energy Products' literature and training stress preventative maintenance and operator awareness. We teach the customer's operators to perform preventative measures, including:

- Condition monitoring of critical parameters.
- Trend analysis of performance.
- Visual inspection of auxiliary systems and external wiring.
- Borescope inspection.
- Water wash.
- Filter changes and inspections.
- Lube oil sampling.

In addition, S&S Energy Products teaches operators to perform routine "condition monitoring," including:

- Gas generator speed.
- Power turbine speed.
- Gas generator exhaust gas temperature.
- Gas generator discharge pressure.
- Vibration.
- Oil pressure.
- Oil temperature.

Condition monitoring, in conjunction with borescope inspections can provide an essential history of engine condition-versus-operating time. This allows maintenance to be predicted and scheduled for an appropriate time.

Water Washing

Water washing the turbine helps to recover performance that has been lost over time, due to compressor airfoil fouling.

S&S Energy Products provides a complete water wash system. All LM6000 units have a crank soak water wash cycle, and base-load" units also have "on-line" water wash capabilities.

The engine bellmouth is equipped with a manifold to spray water-detergent solutions and rinse water. A pressurizing pump on the Auxiliary module forces the solutions from a stainless steel reservoir into the spray manifold.



Maintenance Levels

Downtime for maintenance is reduced by the LM6000's modular design. Routine maintenance tasks are done on-site, while major engine repairs are performed at specialized off-site facilities, saving the customer the expense of tooling and equipment. On-site and off-site maintenance tasks are divided into categories, or "levels" described below.

On-Site Maintenance

LEVEL 1

On-site external maintenance and module replacement. Includes protective and corrective tasks such as:

- Adjusting or replacing externally accessible components
- Engine replacement

LEVEL 2

On-site internal maintenance requiring partial disassembly of the engine and replacement of components includes:

- Compressor blade/vane replacement
- Hot section component replacement
- HPT blade replacement
- Gearbox replacement

Off-Site Maintenance

LEVEL 3

Off-site internal maintenance. Includes all Level 2 capabilities, plus complete teardown and rebuilding of engine. Includes replacement of major sub-assemblies with spare sub-assemblies.

LEVEL 4

Off-site overhaul. Includes Level 3 capabilities plus complete disassembly of the major sub-assemblies of the gas turbine and rebuilding sub-assemblies with replacement parts. A permanent shop and a test cell are required for a Level 4 overhaul facility.

S&S Energy Products has full Level 4 maintenance capabilities for customer's needs. We feature full-load testing of the repaired engine to assure maximum field performance

Owner's Maintenance

In most cases the Owner prefers to have his operators trained to perform Level 1 maintenance to the gas turbine, and Levels 2 - 4 maintenance tasks handled by outside contract. However, S&S Energy Products can train operators for Level 2 maintenance tasks, if desired.

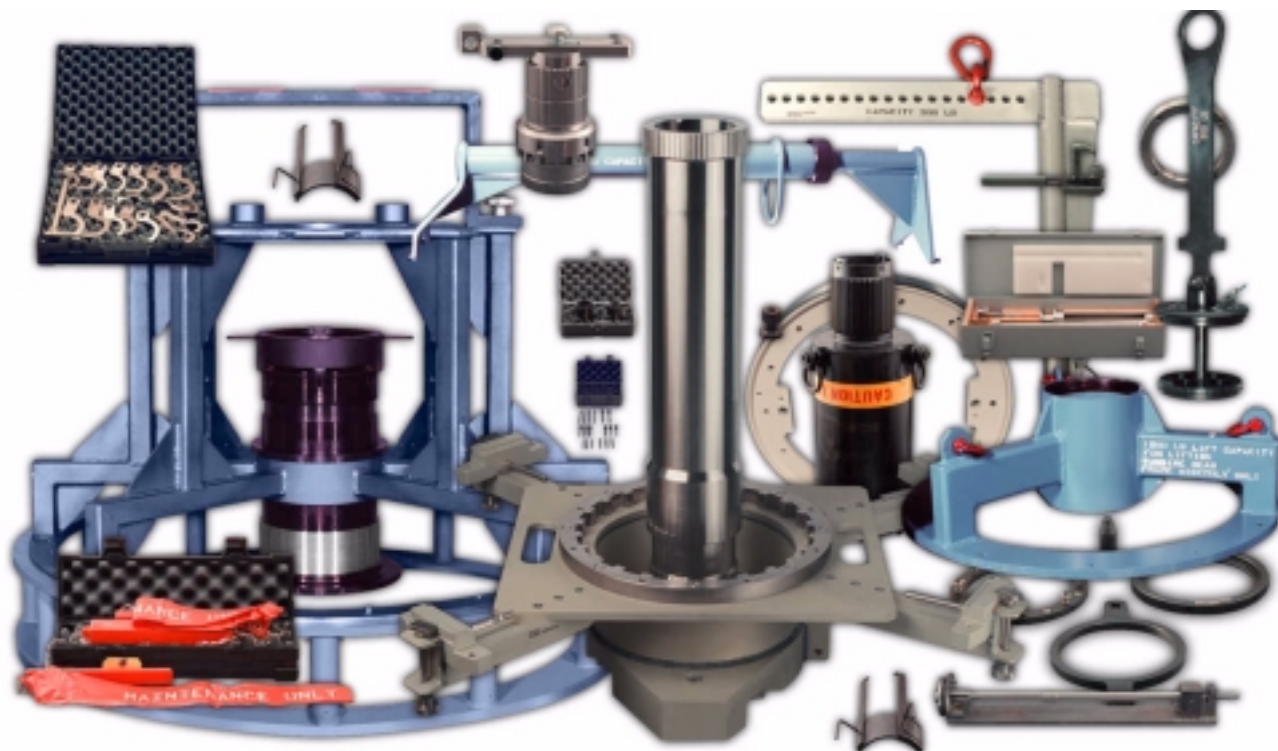
Special Tools

Special tools are required to perform Level 1 and Level 2 maintenance activities. These tools are listed on the following pages and are priced separately for customers intending to perform maintenance themselves.

S&S Energy Products includes a lift fixture for the LM6000 turbine engine in the basic scope of supply. This fixture and the built-in crane are used during engine removal and replacement.



RECOMMENDED LEVEL 1 TOOLING



Special Tools for LM6000 Maintenance

LM6000 Level 1 and On-Site Maintenance Tooling for New Equipment (Minimum Recommendations)

P/N	Description	WP
1C3569G3	Hydraulic Actuator Unit Actuates Hydraulic System for checking VBV, VIGV, and VSV System	WP1112
1C6361G01	Tool Set – Radial Drive Shaft Necessary to remove and reinstall Radial Drive Shaft	WP2810
1C8182G02	Fixture Set – Removal, Mating Seal Used to remove and reinstall Transfer Gearbox Carbon Seal, Mating Ring and O Rings	WP2813
1C8208G02	Drive Adapter, Borescope Motoring Fixture Adapts between Acc. Gearbox and Ratchet for Manual Rotation in Borescope Inspection	WP4015
1C9353G02	Tool Set – Rigging, VBV Doors Used to position the Variable Air Bleed By-pass Valve and Linkage	WP1312
1C9359G02	Rigging Set – VIGV To check travel of Actuator Ring in Relation to Outer Vane Case Req use of 1C3569G3	WP1113
1C9393G01	Adapt. Set, Pressure Test/Rigging-VIGV, VBV, VSV System Necessary to pressure test VBV, VIGV, and VSV System Requires use of 1C3596G3	WP1112



LM6000 Level 1 and On-Site Maintenance Tooling for New Equipment
(Minimum Recommendations) (Continued)

P/N	Description	WP
1C9400G01	Fixture, Raise & Hinge – Upper Compressor Case Necessary to raise, hinge, and prop open the Compr. Stator Case for Rotor Blade Maint.	WP2411
1C9428G01	Adpt. Torque Breaking CSV Actuating Arm Retaining Nut Used to break the torque of the Compressor Stator Vane Actuation Arm Retaining Nuts	WP2412
2C6352G07	Wrench Set, Spanner – Airtube Nuts Necessary to torque Circular Nuts on Air Tubes	MULT
2C6613G01	Gage, Immersion Depth – Igniter Checks Igniter Plug immersion depth	WP1516
2C6647G01	Wrench, Spanner – Compressor Stator Vane Spacer Holds Spacer during Assembly and Disassembly of Compressor Stator Vanes	
2C6925G02	Gage, Set – VSV Clevis Assemblies Sets and Measures Variable Stator Vane Clevis Assemblies to proper length	WP1411
2C8102G02	Fixture, Torque Measuring – VSV Assembly Used to Measure Torque required to actuate Half Rings and Vanes	
RC3501	Borescope Kit – Rigid Type Used for visual inspection of internal components of engine	WP4015
RC3503	Fiberscope 6mm Necessary to inspect areas unaccessable to rigid borescope kit	WP4015
9448M18G01	Hand Tool Kit (Snap-On) Contains Hand Tools necessary for General Maintenance	



LM6000 Tools – Optional

P/N	Description	WP
1C6119G01	Guide – Expandable Bushing Necessary to install expandable bushing into Transfer Gearbox	WP2811
1C9408G01	Fixture Set, Torque Measuring – Compressor VSV Required for setting proper torque of VSV Assembly (low boss vanes)	WP2412
2C14699G02	Fixture, Lift – Compressor Stator Vane Spacer Used to remove and handle Compr. Stator Upper Half with Engine in the Horiz. Position	WP2411
2C6018G01	Tool Set, Holding – VSV Holds individual Variable Stator Vanes for Removal and Installation	WP2412
RC2000-LM	Fixture Drive Electronic Turning Tool – Borescope Inspection Used to electronically rotate engine core for borescope inspection	WP4015
FG145	Borescope Camera With Coupler Still camera attaches to borescope	WP4015

Transportation/Maintenance Dolly Assembly – Optional

P/N	Description	WP
1C9371G01	Ring Assy – Support IGV Stator Case Provides support for EGV Case Forward Flange required for 1C9372G05	WP3012
1C9372G05	Maintenance Dolly – External Engine Provides frame Assy for use with multiple adapters for Horiz. Engine Maint./Transportation	WP3012
1C9373G01	Adapter Set – Pedestal Turbine, Rear Frame Adapter from Mount Side TRF to Horiz. Engine Maint./Trans Dolly required for 1C9372G05	WP3012
1C9375G01	Adapter Set – Support Air Manifold Provides support at Air Collector Forward Side required for 1C9372G05	WP3012
1C9376G01	Jack Assembly, Support Compressor Rear Frame Supports Aft Flange of HPC Stator Case for Horiz. Eng. Support required for 1C9372G05	WP3012
1C9377G01	Adapter Set Assembly – Support LPC Forward Supports Fwd Flange of LPC Case if VIGV is removed required for 1C9372G05	WP3012
1C9378G02	Adapter Assembly – Maintenance Dolly Adapter Assy's for Horizontal Engine Maint./Transportation Dolly required for 1C9372G05	WP3012



LM6000 Level II Tools

8200	Torque Multiplier (Sweeney)
1C6804G04	Tool Set, Jack Screw – Disassemble Flanges
1C6892G01	Push Bolt – CFF/TGV Bracket
1C9116G01	Fixture, Lift LP Rotor and Stator Fwd.
1C9150G02	Tool Set, Jack Screws
1C9302G02	Tool Set, Assembly, Install – Balance Piston Seals
1C9316G02	Adapter, Sleeve LPT Rotor Shaft
1C9317G01	Adapter, Support / Lift LPC
1C9327G03	Puller, LPT Module – Mid Shaft
1C9336G01	Fixture, Assembly, Install / Remove – Aft Drive Shaft Nut
1C9338G02	Fixture, Fwd Restraint – LPT RTR to STTR
1C9354G03	Dolly Assembly, LM600 Engine Changeout
1C9358G02	Fixture, Lift, HPT, Horizontal
1C9362G02	Adapter, Lift, Combustor & HPT Nozzle Stg 1&2
1C9385G01	Fixture, Support – LPC Rotor / Stator
1C9390G01	Fixture Assembly, Lift & Turn VIGV
1C9397G01	Holder, Shim
1C9608G01	Pusher/Puller HPT (Used with 2C14199G09)
1C9609G01	Adapter Assembly Drive Rear
1C9610G01	Pilot, LP Mid Shaft, Aft
1C9613G01	Fixture, Lift and Turn LPT Horizontal (Strongback)
1C9616G01	Fixture, Seating Check LPTR
1C9617G01	Wrench, LPTS Coupling Nut
1V9618G01	Tool, Install/Remove LPT Snap Ring
1C9619G01	Fixture, Torque LPT Coupling Nut
1C9620G01	Gage Inspection, Fan Shaft to HPC Case
1C9622G01	Collar Center
1C9626G01	Wrench HPT Coupling Nut
1C9627G01	Fixture, Lift and Turn LPT Horizontal
2C14025G05	Pusher Set – Races / Seals HPTR Stg 1
2C14038G02	Fixture, Lift – HPTR Aft
2C14049G01	Truck, HP Turbine Rotor Horizontal
2C14094G06	Fixture, Seal Check No. 4 Bearing and Seal
2C14131G02	Fixture, Seating Check
2C14199G09	Pusher/Puller HPTR
2C14222G01	Remove and Replace HPTR Seals
2C14664G01	Wrench Set, No. 5R Bearing Inner Race Nut
2C14672G02	Fixture, Lift – HP Turbine Assembly Forward
2C14679P01	Sleeve Retaining, No. 4 Bearing Stackup
2C14684G02	Tool Set, Remove / Install – HPC Str Vane Spacer
2C14688G04	Puller, Races and Seals HPTR Stg 1
2C14689G01	Adapter, Lift – Combustor
2C14691G01	Fixture, Inst/Remove Combustor
2C14693G01	Tool Set, Install / Remove – LPT Module – Core Module
2C14695G01	Fixture, Lift – Stage 1 HPT Nozzle Assembly
2C14703G01	Adapter, Lift – Stage 2 HPT Nozzle
2C14785G02	Fixture, Removal HPT Aft Air Seals
2C6348P02	Pin, Guide – Fan Rotor Installation
2C6967G06	Tool, Install, S-2, HPC Blade Retainer Lock Pin
2C6968G02	Tool, Removal, S-2, HPC Blade Retainer Lock Pin
8112B	Torque Multiplier (Sweeney)



TYPICAL LM6000 START-UP AND COMMISSIONING SPARES		
QTY	PART NUMBER	DESCRIPTION
4	5VX1000	BELT, GENERATOR, SUPPLY FAN
6	5VX1250	BELT, TURBINE, EXHAUST FAN
4	HC9600FKN13Z	FILTER ELEMENT, TURBINE
1	CONNTECT 5000	WATERWASH (55 GAL DRUM)
2	HC9606FKS8Z	FILTER ELEMENT, HP HYDRAULIC
5	AL1335	50MA FUSES
5	AL1328	2 AMP FUSES
5	AL1310	0.1 AMP FUSE
5	AL1269	4 AMP FUSE
5	AL1308	31 MA FUSE
5	P13-2582	3 AMP FUSE
5	P13-5712	1/4 AMP FUSE
1	226166-001	CALIBRATION, GAS CYLINDER
5	CGI-3L	GASKET,FLG.4"-300#
5	CGI-3P	GASKET,FLG.6"-300#
5	CGI-3Q	GASKET,FLG.8 -300#
5	CGI-6D	GASKET,FLG.1"-600#
5	CGI-6G	GASKET,FLG.2"-600#
5	CGI-6J	GASKET,FLG.3"-600#
5	CGI-6L	GASKET,FLG.4"-600#
2	HC9600FKD13Z	FUEL FILTER (LIQUID)
1	ACB2442440Y1	FILTER ELEMENT,TURBINE HYD
2	P16-5659	FILTER ELEMENT,HYD START
1	HUOO157956	FILTER ELEMENT, CHARGE PUMP

G-297-00



RECOMMENDED SPARES

Listed are the “minimum” recommended spare parts for a typical LM6000 gas turbine generator set. Special configuration specific lists can be prepared upon request.

TYPICAL LM6000 “CRITICAL” SPARES		
QTY	PART NUMBER	DESCRIPTION
LM6000 "CRITICAL" SPARES (All Configurations)		
1	1304M52G03	Plug,HPT Stage 2 Borescope
1	9392M95P04	Plug,Igniter
1	L21131P02	Sensor,Speed XN25
1	L28490P05	Sensor,Flame
1	L31967P01	Accelerometer
1	L31967P06	Accelerometer
1	L35166P01	Detector,Resistance
1	L43563P01	Detector,Chip
1	RD34485	Screen
1	RD34489	Screen
1	RD35234	Screen
1	L44500P02	Lube Oil Scavenge Pump
S1. LM 6000 "CRITICAL" SPARES - PC CONFIGURATION		
1	L44684P01	Sensor,LP Speed
1	L44736P01	Harness,T48 Upper
1	L44745P01	Sensor,T2/P2
1	L44745P02	Sensor,T25/P25
S3. LM6000 "CRITICAL" SPARES DUAL FUEL WITH WATER INJECTION		
1	9504M33P01	Sensor,Temperature
6	L31476P53	Nozzle,Fuel
1	L31476P54	Nozzle,Dual
6	L45816P04	Hose,Fuel
1	L45881P04	Hose,Fuel-Primary
1	L45882P04	Hose,Fuel-Secondary
2	L45921P01	Gasket
2	L45970G01	Tube,Fuel
2	L45972G01	Tube,Fuel

G-296-00



TYPICAL SPARE PART RECOMMENDATIONS FOR TWO YEARS OF OPERATION		
QTY	PART NUMBER	DESCRIPTION
A. VENTILATION & COMBUSTION		
4	5VX1000	Belt, Generator Supply Fan
6	5VX1250	Belt, Turbine Exhaust Fan
B. TURBINE LUBE OIL		
1	95-117	Element, Filter-Lube Oil Tank Demister
2	ACB2442440Y1	Element, Filter-VGV Pump
4	HC9600FKN13Z	Element, Filter-Lube Oil
C. FUEL SYSTEM (GAS)		
1	132P46C6B	Switch, Pressure-Fuel Gas
1	78R25N00A025T34E5	Sensor, Temperature-Fuel Gas
1	PG3000-01M-48-12-21-XX-93	Transmitter, Pressure, Fuel Supply
D. FUEL SYSTEM (LIQUID)		
1	1151GP9E22B2D3	Transmitter, Pressure, Liquid Fuel/
1	8915-877	Valve, Liquid Fuel
2	HC9600FKD13Z	Element, Filter
F. AUXILIARY SYSTEMS		
1	1151AP6E22B2D3	Transmitter, Pressure-HP Compressor
1	330100-50-01	Proximeter
1	330130-045-01-00	Cable, 4.5 Meter
1	330130-085-01-00	Cable, 8.5 Meter
1	86517-01-01-01-01	Module-Accelerometer Interface
1	EJA310-DAS4B-92NC/HAC	Transmitter, Pressure-Inlet Static
1	PA3000-01M-48-13-21-XX-93	Transmitter, Pressure-Turbine HP
1	PA3000-200-48-13-21-XX-93	Transmitter, Pressure-LP Turbine Inlet
1	PA3000-500-48-13-21-XX-93	Transmitter, Pressure-Thrust Balance
G. HYDRAULIC START SYSTEM		
1	100P44C6R	Switch, Pressure-Hydraulic Pump
1	180P44C6R	Switch, Vacuum-Charge Pump
1	273800	Overrunning Clutch
1	HU00157956	Element-Charge Pump
4	P16-5659	Element, Filter-Charge Pump
H. TURBINE HYDRAULIC SYSTEM		
2	HC9606FKS8Z	Element, Filter High Pressure

G-298-00



TWO YEARS SPARES (Continued)		
QTY	PART NUMBER	DESCRIPTION
I. GENERATOR LUBE OIL SYSTEM		
1	132P4S129	Switch,Pressure-Lube Oil
1	132P4S185	Switch,Pressure Switch-Lube Oil
1	655R-EDR-2"	Valve,Control-Generator/Pressure
1	78R25N00A025T34E5	Sensor,Temperature-Lube Oil Supply
2	HC9600FKN13Z	Element,Filter-Lube Oil
1	L-471-02-SG1	Switch,Level-Rundown Tank
2	P16-7185	Element,Filter-Jacking Oil Pump
K. PURGE SYSTEM (Dual Fuel Only)		
1	7J30D1/305-01BH-D-6-C-007.5-	Sensor,Purge Temperature
1	C327335	Control,Purge Flow (VB)
1	C327345	Control,Purge Flow Vent (VV1)
1	C327405	Control,Purge Flow (VA)
L. LIQUID FUEL BOOST		
1	1151GP6E22B2D3	Transmitter,Pressure Supply
1	86160R1W039A-1	Pump,Liquid Fuel
M. SPRINT SYSTEM		
1	132P49C6B	Switch,Pressure
1	160P4S36	Switch,Pressure
1	3051CG5A02A1AS5M5	Transmitter,Pressure
1	3051TG3A2A214B4E5	Transmitter,Pressure
1	V6-EPB-S-S-3-S	Switch,Flow
1	10319HE	Switch,Temperature
1	1530-X1061	Valve,Solenoid
Q. LM6000 CONSUMABLES		
2	1337M46P03	GASKET
5	1538M42P01	GASKET
1	619E223P52	FITTING REDUCER
5	635E901P02	NUT SLF LKG
1	9009M74P01	GASKET, ROUND
2	9011M60P01	GASKET
1	9013M28P02	GASKET
1	9013M29P02	GASKET
1	9013M30P02	GASKET
1	9014M45P64	CLAMP
30	9016M30P02	SEAL, RING
3	9048M33P05	BEARING
1	9057M50P01	SEAL
5	9107M23P01	GASKET
2	9107M55P01	SHIM



TWO YEARS SPARES (Continued)		
QTY	PART NUMBER	DESCRIPTION
Q. LM6000 CONSUMABLES (Continued)		
10	9365M41P117	PACKING
10	9365M41P122	PACKING
2	9371M19P04	SEAL
2	9371M19P06	SEAL
1	9371M19P08	SEAL
4	9371M19P10	SEAL
3	9371M19P12	SEAL
10	9378M31P01	FITTING
8	9379M93P01	GASKET
2	9397M22P02	LOCK WASHER
5	9608M12P02	GASKET
5	9609M13P02	GUIDE
25	9610M50P29	NUT
25	9629M48P02	NUT
25	9629M48P04	NUT
25	9629M48P06	NUT
25	9629M48P10	NUT
1	9649M39P04	CLAMP
1	AC-B244F-2440	FILTER ELEMENT
100	AN960C10	FLAT WASHER
100	AN960C10L	FLAT WASHER
100	AN960C416L	FLAT WASHER
100	AN960C516	WASHER
100	AN960C516L	WASHER
100	AN960C616L	FLAT WASHER
5	J1092P04	NUT
5	J1092P05	NUT
1	J219P02	GASKET
2	J219P03	SEAL GASKET
4	J219P04	SEAL GASKET
1	J219P07	GASKET SEAL
25	J221P216	PACKING, PREFORMED
25	J221P222	PACKING, PREFORMED
5	J221P224	PACKING, PREFORMED
1	J221P260	PACKING, PREFORMED
25	J221P904	PACKING, PREFORMED
25	J221P905	PACKING
25	J221P906	PACKING
25	J221P908	PACKING
25	J221P910	PACKING
25	J221P912	PACKING, PREFORMED
25	J221P916	PACKING, PREFORMED
6	J415P123A	BOLT



TWO YEARS SPARES (Continued)		
QTY	PART NUMBER	DESCRIPTION
Q. LM6000 CONSUMABLES (Continued)		
1	J534P06	TUBE NIPPLE
1	J534P08	NIPPLE
2	J534P10	TUBE NIPPLE
2	J534P12	TUBE NIPPLE
5	J628P06D	NUT
25	J643P04B	MACHINE BOLT
10	J643P12A	MACHINE BOLT
5	J644P06D	MACHINE BOLT
10	J644P07D	BOLT
90	J644P08D	MACHINE BOLT
5	J644P09D	BOLT
10	J645P30A	BOLT
1	L22281P02	GASKET
5	L34976P069	BOLT
1	M83248/1-121	PACKING
1	M83248/1-243	PACKING
1	M83248/1-904	PACKING
5	M83248/1-905	PACKING
2	M83248/1-910	PACKING
3	M83248/1-912	PACKING
5	MS21083C4	NUT SLF LKG
5	MS21083C5	NUT
5	MS9193-04	CONNECTOR
1	MS9193-12	CONNECTOR
2	MS9202-042	GASKET
25	MS9315-04	TUBE CAP
5	MS9315-12	CAP ASSY
100	MS9321-10	WASHER FLAT
5	MS9404-04	PLUG
5	MS9557-07	MACHINE BOLT
5	MS9557-10	MACHINE BOLT
5	MS9557-22	MACHINE BOLT
5	MS9567-14	BOLT
1	NAS1291C8M	NUT
1	R1316P007	PACKING
4	R287P04	NIPPLE
1	R287P06	NIPPLE, TUBE
2	R287P08	NIPPLE
2	R287P10	NIPPLE



TWO YEARS SPARES (Continued)		
QTY	PART NUMBER	DESCRIPTION
R. LM6000 CONSUMABLES "PC"		
5	1704M61P03	SLEEVE
5	1704M62P04	SPACER
5	1704M62P05	SPACER
5	1704M63G07	ARM
1	1704M63G08	ARM
5	1704M63G09	ARM
1	1704M63G10	ARM
5	1704M63G11	ARM
1	1704M63G12	ARM
2	1774M59P01	SEAL
2	705B276P5	RING
5	9009M32P01	WASHER
5	9108M27P03	BOLT
5	9365M41P229	SEAL
1	9397M20P02	BUSHING
25	9609M43P02	WASHER
5	9628M16P02	BOLT
5	9699M66P01	BOLT
25	AN316C4R	NUT
5	J1220G05	CLAMP
5	J1221G03	CLAMP
5	J1221G04	CLAMP
5	J1221G07	CLAMP
5	J1221G08	CLAMP
5	J1221G10	CLAMP
5	J201P04	NUT
5	J221P028	PACKING
5	J221P138	PACKING
5	J221P163	PACKING
5	J221P219	PACKING
5	J221P240	PACKING
5	J221P903	PACKING
5	J414P034A	BOLT
1	J511P106	NIPPLE
1	J511P108	NIPPLE
1	J511P110	NIPPLE
1	J511P112	NIPPLE
5	J644P10A	BOLT
5	J644P12A	BOLT
2	J816P072C	BOLT
5	L43073P01	GASKET
1	L43616P01	BOLT
25	L47372P01	PACKING



TWO YEARS SPARES (Continued)		
QTY	PART NUMBER	DESCRIPTION
R. LM6000 CONSUMABLES "PC" (Continued)		
5	MS9201-04	NUT
5	MS9371-15	GASKET
5	MS9489-07	BOLT
5	MS9556-07	BOLT
5	MS9556-10	BOLT
5	MS9557-06	BOLT
5	MS9557-09	BOLT
5	MS9557-14	BOLT
5	MS9557-38	BOLT
5	MS9565-05	BOLT
5	MS9566-12	BOLT
5	MS9902-03	PLUG
5	MS9902-04	PLUG
5	MS9902-06	PLUG
5	MS9902-08	PLUG
5	MS9902-10	PLUG



TWO YEARS SPARES (Continued)		
QTY	PART NUMBER	DESCRIPTION
T. GENERATOR SPARES		
1	00176-198	SEAL KIT (L.O. PUMP) (NEW)
2	1174392/01	BRUSH HOLDER
2	1327747/04	FUSE SF21
6	18711-115	GASKET CMPND (HYLOMAR) 100
24	25281-528	HEATER FINNED 650W
5	25711-012	FUSE 4F21
5	25711-249	FUSE 20ET
12	25711-425	FUSE 315SBMT (3127032/01)
12	25711-428	FUSE 450SBMT (3132472/01)
5	25715-005	FUSE 250mA, SIZE 0
5	25715-006	FUSE 500mA, SIZE 0
5	25715-010	FUSE 2A, SIZE 0
2	25771-148	RELAY VP/2 26V
2	25771-163	RELAY 24VDC 3P
2	25771-167	RELAY COMAT 125VDC
1	26632-032	POT 500R + 500R
1	26661-014	POT DRIVE UNIT
6	28239-088	DIODE (6W12030VO)
6	28239-089	DIODE (6W02030VO)
2	28278-218	DIODE BRIDGE 36MB80
2	28428-187	THYRISTOR N018R/H08
2	29812-761	RTD TEMP DETECTOR
2	3116456/52	INSULATED WASHER SET (20/SET)
10	3116682/01	EARTHING BRUSH
2	3122916/01	EXCITER HEATER
2	3127195/01	RTD AIR TEMP DETECTOR
10	3128497/01	SEAL RING SPRING
2	3130399/19	INSULATED TUBE SET (20/SET)
2	3130399/27	INSULATED TUBE SET (20/SET)
2	3135217/01	DUPLEX RTD BEARING METAL
2	3135356/01	GASKET F/BEARING
1	3140899/01	L.O. PUMP ACG045N5
1	3142638/01	L.O. PUMP COUPLING
1	9602933/00	ASSY AUTO POWER CARD
1	9602943/00	ASSY PF CONTROL CARD
1	9602947/00	ASSY VOLTS MONITOR CARD
1	9607087/00	ASSY EHC CD, AUX RACK
1	9608488/00	ASSY EXCITER MONITOR CARD
1	9611592/00	MAVR CONTROL CARD, TYPE B
1	9615175/00	ASSY EXCITER LMTR CD, TYPE B